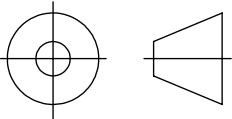
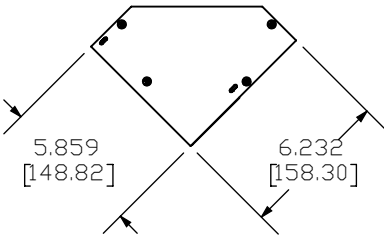
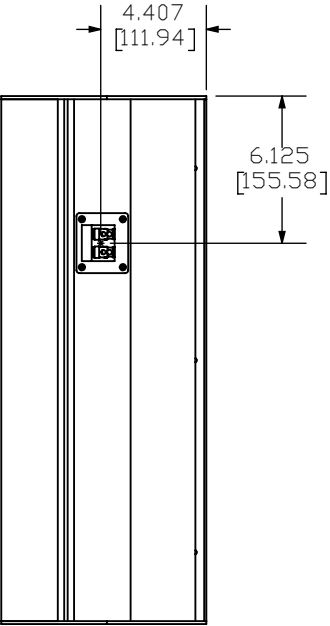
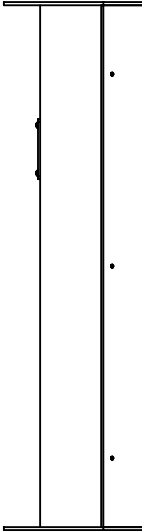
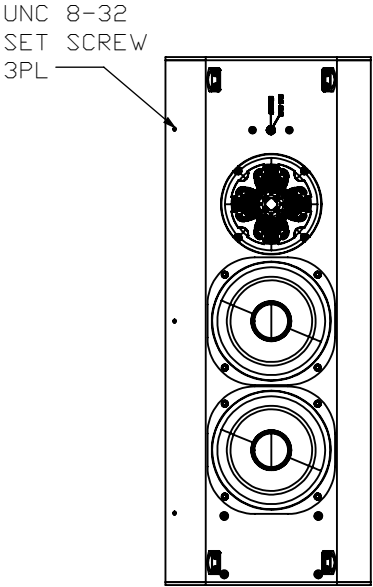
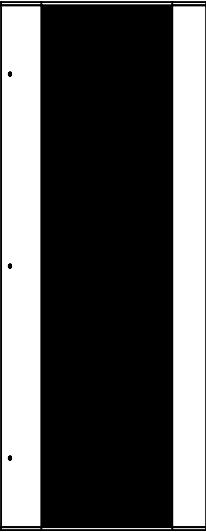
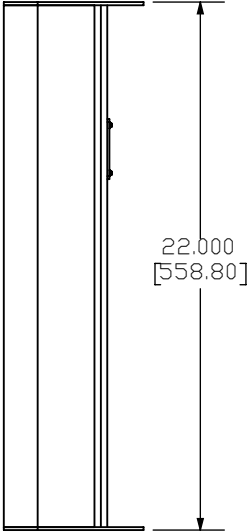
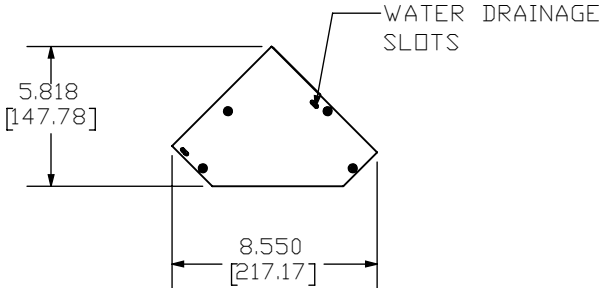


REVISIONS				
ECN	REV.	DESCRIPTION	DATE	APPROVED
	A	RELEASE FOR PRODUCTION	01-21-26	



"THIRD ANGLE" PROJECTION

PROPRIETARY INFORMATION	<i>JAMES LOUDSPEAKER</i>
THE DESIGNS, INFORMATION, AND DATA CONTAINED HEREIN ARE PROPRIETARY AND ARE SUBMITTED IN CONFIDENCE, AND SHALL NOT BE DISCLOSED, USED OR DUPLICATED IN WHOLE OR IN PART, FOR ANY PURPOSES WHATSOEVER, WITHOUT THE PRIOR WRITTEN PERMISSION OF JAMES LOUDSPEAKER LLC, 2185 PARK PL, MINDEN, NV 89423. THIS LEGEND SHALL BE MARKED ON ANY REPRODUCTIONS HEREOF IN WHOLE OR IN PART. RECEIPT OF THIS DOCUMENT SHALL BE DEEMED TO BE AN ACCEPTANCE OF THE CONDITIONS SPECIFIED HEREIN.	WX58QT STANDARD
	EXTERNAL DIMENSIONS
	P/N: -
	DWR #: 260121-JG101
	REVISED BY: -
	DRAWN BY: J. GALLAGHER
	DATE: 01-21-26
	SCALE:
	TOLERANCES: ANG: $\pm = .5^{\circ}$ FRACT. $\pm = 1/32$ DECIMALS: .XX $\pm = .01$.XXX $\pm = .005$
	SHEET 1 OF 7